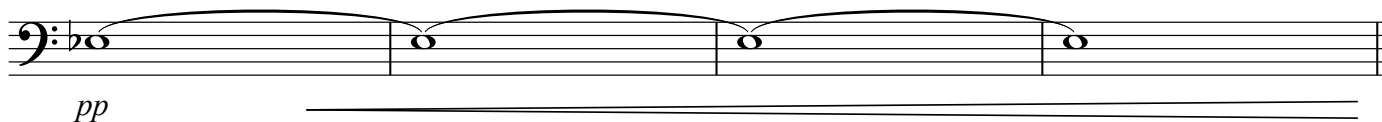
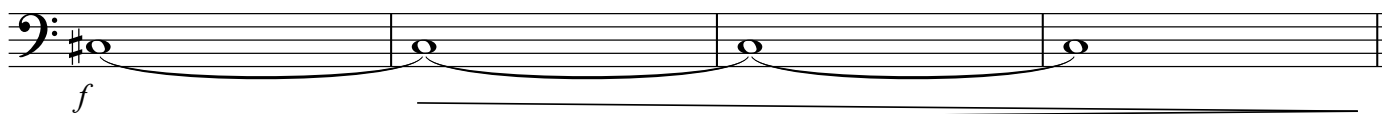
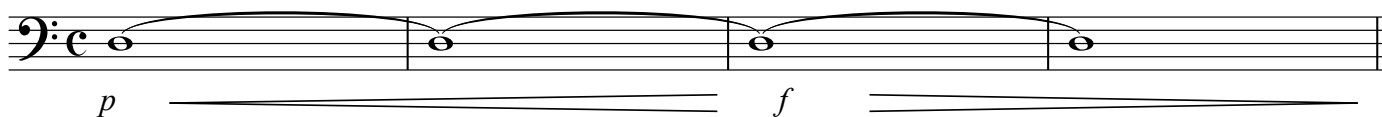


Daily Long Tones for Bassoon

Use different pitches each day.
Use a metronome off the beat. Use a tuner.

Compiled by George Sakakeeny

♩ = 60



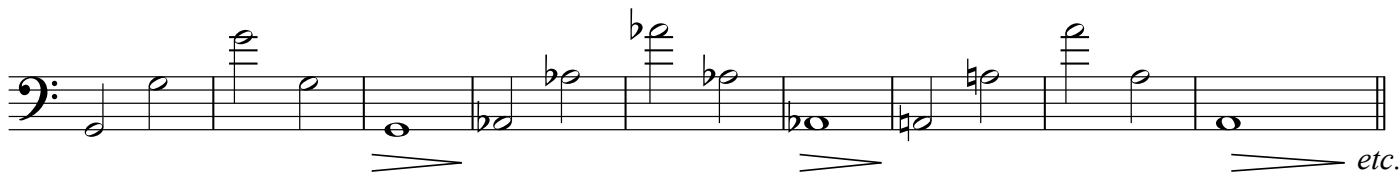
Use a different pitch each day. Hold as long as possible. Count the seconds.
Try to increase your time each day.



Keep your air supported through the rests as you articulate. Let up only when you take a breath.
Use a metronome off the beat. Attack each note exactly in time.



Listen carefully for precise intonation. Use a tuner and a metronome off the beat. Hear the
pitch of each note before you play it. Begin each note exactly in time and pitch. Keep pitch steady.



Two staves of musical notation in bass clef. The first staff shows a sequence of eighth notes: C₂, D₂, E₂, F₂, G₂, A₂, B₂, C₃, D₃, E₃, F₃, G₃, A₃, B₃, C₄. The second staff shows a sequence of eighth notes: B₁, A₁, G₁, F₁, E₁, D₁, C₁, B₀, A₀, G₀, F₀, E₀, D₀, C₀, B₋₁. Both staves end with a fermata and the word "etc."

For the broken arpeggio focus on playing legato in every way. Air, Vibrato, Finger motion. Use a tuner. Use a metronome off the beat. Play in two different keys each day.

Two staves of musical notation in bass clef. The first staff shows a sequence of eighth notes: C₂, D₂, E₂, F₂, G₂, A₂, B₂, C₃, D₃, E₃, F₃, G₃, A₃, B₃, C₄. The second staff shows a sequence of eighth notes: B₁, A₁, G₁, F₁, E₁, D₁, C₁, B₀, A₀, G₀, F₀, E₀, D₀, C₀, B₋₁. Both staves are marked "legato" and end with a fermata and the word "etc."

Play in a different major or minor key each day. Connect each pitch in tone quality and vibrato. Use a tuner and a metronome off the beat.

A single staff of musical notation in bass clef showing a sequence of eighth notes: C₂, D₂, E₂, F₂, G₂, A₂, B₂, C₃, D₃, E₃, F₃, G₃, A₃, B₃, C₄. The notes are marked with sharp signs (#) for D₂, E₂, F₂, G₂, A₂, B₂, C₃, D₃, E₃, F₃, G₃, A₃, B₃. The staff is marked "legato" and ends with a fermata.